

Eyjafjallajökull volcanic eruption in Iceland

Ash observations at SolData Instruments, Silkeborg, Denmark

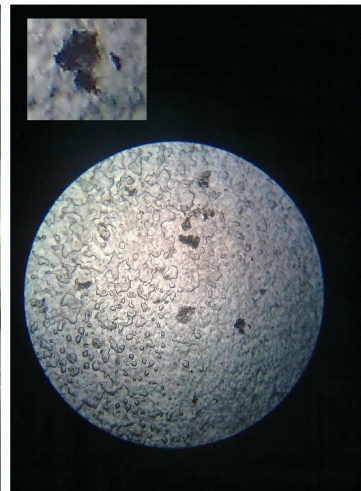


The images at the above left show views of the Eyjafjalla Glacier Volcano from low and from high altitude respectively. During the most violent period of eruption large clouds of ash disturbed air traffic in the North Atlantic and in large areas of Northern Europe.

The lower row of photos shows ash residue observed on a car windshield at SolData Instruments around April 20th, 2010.

Microscopic examination of particles collected showed them to be about 10 microns in diameter. The SolData pyrliometer at the right was unable to find a measureable decrease in the direct solar irradiance due to the ash cloud.

SolData Instruments (56.1532N, 9.6813E) is located about 1750 kilometers southeast (azimuth angle 130°) of Eyjafjalla Glacier.



LINKS TO MORE INFORMATION:

Photo collection from the volcano:

http://www.boston.com/bigpicture/2010/04/icelands_disruptive_volcano.html

Dramatic video from volcano:

<http://www.telegraph.co.uk/news/newsvideo/7606277/Dramatic-footage-of-ash-and-lightning-above-Iceland-volcano.html>